



**M A R B L E   S Y S T E M S<sup>®</sup>**

DREAMING COLLECTION



## DREAMING COLLECTION

Marble Systems introduces the Dreaming porcelain collection. A stunning display of porcelain glazes executed to resemble marble in four classic colors. This collection offers a variety of tile sizes applicable for floor or wall coverings.

# BIANCO STATUARIO

PORCELAIN



## FLOOR/WALL TILE

---



**BIANCO STATUARIO Lux Rectified**  
WLE00008 - 24"x24"



**BIANCO STATUARIO Lux Rectified**  
WLE00016 - 12"x24"



**BIANCO STATUARIO Velvet Rectified**  
WLE00136 - 12"x24"

## MOSAIC

---



**BIANCO STATUARIO Lux**  
WLE00041 - 1"x1" Mosaic

## BULLNOSE

---



**BIANCO STATUARIO Lux Rectified**  
WLE00035 - 4"x24"



**BIANCO STATUARIO Velvet**  
WLE00031 - 4"x24"

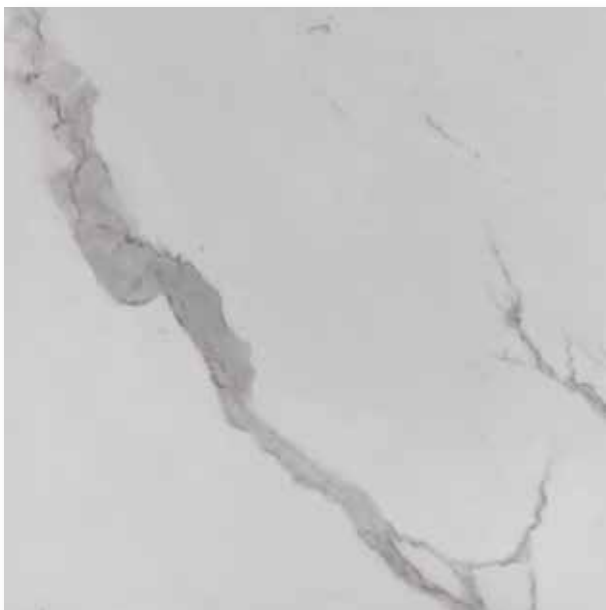
# CALACATTA SHINE

PORCELAIN



## FLOOR/WALL TILE

---



**CALACATTA SHINE Lux Rectified**  
WLE00129 - 24"x24"



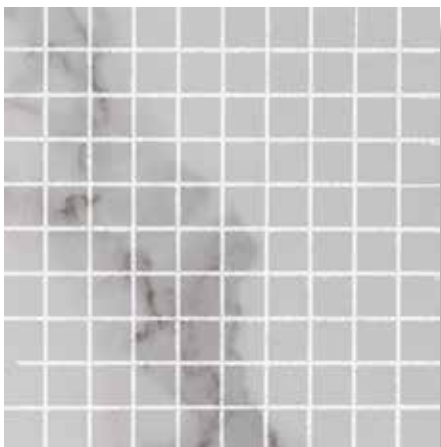
**CALACATTA SHINE Lux Rectified**  
WLE00128 - 12"x24"



**CALACATTA SHINE Velvet Rectified**  
WLE00133 - 12"x24"

## MOSAIC

---



**CALACATTA SHINE Lux**  
WLE00027 - 1"x1" Mosaic

## BULLNOSE

---



**CALACATTA SHINE Lux Rectified**  
WLE00131 - 4"x24"



**CALACATTA SHINE Velvet**  
WLE00132 - 4"x24"

## SLAB

---



**CALACATTA SHINE Lux**  
WLE00138 - 118 7/64"x39 3/8"x7/32"



| CRYSTAL WHITE  
PORCELAIN





## FLOOR/WALL TILE

---



**CRYSTAL WHITE** Lux Rectified  
WLE00017 - 12"x24"



**CRYSTAL WHITE** Velvet Rectified  
WLE00020 - 12"x24"

## MOSAIC

---



**CRYSTAL WHITE** Lux  
WLE00042 - 1"x1" Mosaic

## BULLNOSE

---



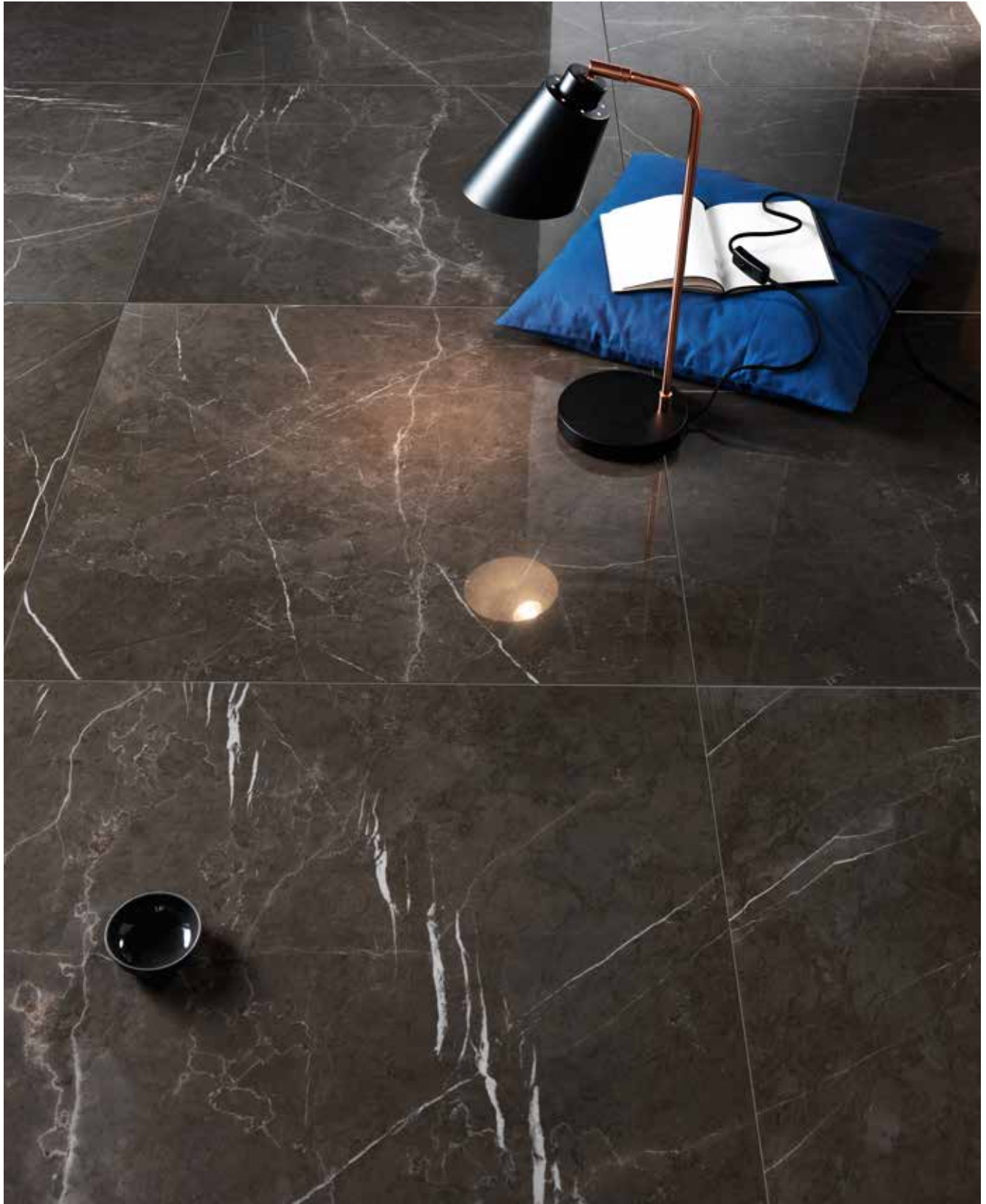
**CRYSTAL WHITE** Lux Rectified  
WLE00036 - 4"x24"



**CRYSTAL WHITE** Velvet  
WLE00032 - 4"x24"



| GRAY STONE  
| PORCELAIN



## FLOOR/WALL TILE

---



**GRAY STONE Lux Rectified**  
WLE00119 - 12"x24"



**GRAY STONE Velvet Rectified**  
WLE00124 - 12"x24"

## MOSAIC

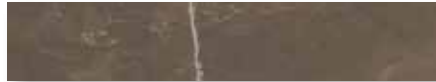
---



**GRAY STONE Lux**  
WLE00118 - 1"x1" Mosaic

## BULLNOSE

---



**GRAY STONE Lux Rectified**  
WLE00122 - 4"x24"



**GRAY STONE Velvet**  
WLE00123 - 4"x24"





# TECHNICAL INFORMATION



| TECHNICAL CHARACTERISTICS              | TEST METHOD       | AVERAGE VALUE   | USES              |
|--|-------------------|---|-------------------|
| Water absorption                       | ISO 10545-3       | Compliant   | HOTELS            |
| Frost resistance                       | ISO 10545-12      | Resistant   | HOUSING           |
| Bending strength                       | ISO 10545-4       | $\geq 45 \text{ N/mm}^2$                                    | BAR - RESTAURANTS |
| Breaking strength                      | ISO 10545-4       | (velvet) Spess. 11mm: $\geq 3000 \text{ N}$                 | SHOPS             |
| Resistance to deep abrasion            | ISO 10545-6       | Non applicable  | PUBLIC SPACES     |
| Resistance to deep abrasion            | ISO 10545-7       | Pei 4 lux<br>Pei 5 velvet                                   | AIRPORTS          |
| Thermal expansion                      | ISO 10545-8       | $\alpha \leq 7 \times 10^{-6} \text{ } ^\circ\text{C}^{-1}$ | MALLS             |
| Thermal shock resistance               | ISO 10545-9       | Resistant   | TRAIN STATIONS    |
| Chemical resistance                    | ISO 10545-13      | Resistant   |                   |
| Stain resistance                       | ISO 10545-14      | 5 (velvet) compliant (lux)                                  |                   |
| Coefficient of friction (COF)          | ASTM C1028        | Wet/dry COF $\geq 0.60$ (velvet)                            |                   |
| Dynamic coefficient of friction (DCOF) | ANSI A 137.1:2012 | DCOF $\geq 0.42$ (velvet)                                   |                   |
| Shading                                |                   | V3  |                   |

The LUX finish is only recommended for residential and light commercial applications.





# MARBLE SYSTEMS®

Since 1982, Marble Systems Inc. has been committed to creating exquisite collections of natural stone. Quarried and processed to exacting specifications using the latest manufacturing technology, our product lines are produced in a wide variety of specialized surface finishes ranging from our smooth Patika and polished lines to our rustic tumbled, chiseled, and antiqued designs.

With distribution and design centers in Washington, D.C., New York, Florida and Los Angeles, Marble Systems is uniquely positioned to provide an extensive supply of the industry's highest quality natural stone products.

Why? Marble Systems is the exclusive distributor of The Tureks Stone Collection, bringing with it the strength of expert quarry and manufacturing operations and the highest levels of quality control, while insuring for the quality, consistency and supply of trade professionals and dealers. We control our stock from the quarry, to the factory, from our warehouse, to your door.

Today, Marble Systems has emerged as the leading choice among top architects, interior designers and discriminating homeowners seeking the finest in natural stone products. Several of our most prestigious projects include: Merrick Plaza in Miami, Trump Plaza in New York, and the Bellagio Casino in Las Vegas.

If you're looking for the finest selection of natural stone, select Marble Systems. The clear leading source for naturally beautiful surfaces.





[www.marblesystems.com](http://www.marblesystems.com)

Copyright © 2016 Marble Systems, Inc. No part of this book may be reproduced by any means for commercial purposes.  
Marble Systems will vigorously protect this and all other copyrights noted in this book.